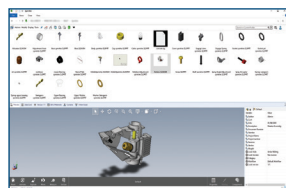


# WHAT'S NEW IN SOLIDWORKS® 2022— DATA MANAGEMENT

## SOLIDWORKS PDM

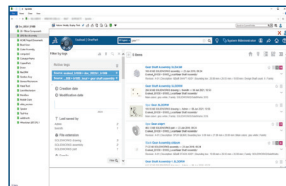


### 1 eDrawings Viewer Enhancements

- Access all eDrawings® features from within Microsoft® File Explorer.
- Switch from a bitmap image to an eDrawings 3D model using a new Load Preview button.
- Use the markup icon that indicates if annotations are available for this file.

#### Benefits

Save significant time when previewing your SOLIDWORKS files.

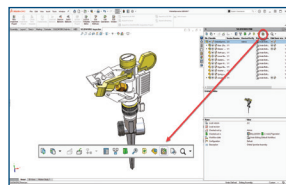


### 2 EXALEAD OnePart Search Integration

- Find EXALEAD® OnePart components directly from within SOLIDWORKS PDM.
- Download and insert approved library components inside your 3D designs.

#### Benefits

Quickly find components from preferred manufacturers and add them to your projects.

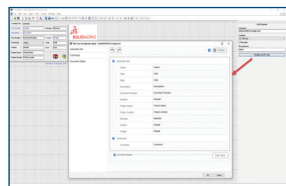


### 3 Quick Access to Related Drawings

- More easily find and open related drawings with the new Open Drawing icon in the SOLIDWORKS Task Pane.
- Get access to the active model as well as the objects selected through the component tree.

#### Benefits

Load related 2D drawings with a single click and make sure they are updated accordingly.

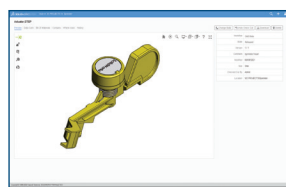


### 4 Web2 Data Card Layout Improvement

- Configure the data card layout for browser-based clients from the administration tool.
- Provide consistency in how variables are presented between thin (internet browser) and thick (Windows Explorer) clients.

#### Benefits

Reorder the information layout for quick access to the most popular content.

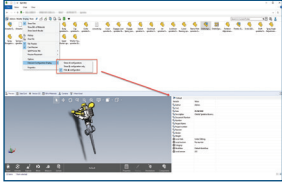


### 5 Additional File Format Support Using Web2

- Enjoy support for additional file types, including STEP, IGES, STL, Parasolid®, ACIS®, and JT in eDrawings Viewer when using SOLIDWORKS PDM Web2.

#### Benefits

Quickly preview popular 3D formats directly from within an internet browser.

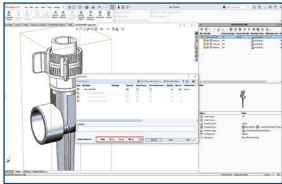


## 6 Configuration Management

- Configure the display of configurations in data cards. (Show only @ configuration, Hide @ Configuration, or Show all configurations.)
- Add a shortcut to easily switch between display modes and configure modes for specific groups or users.
- Configure data cards so that the default variable value gets assigned to @ configuration only.

### Benefits

Display only relevant information in order to focus on what is most important.



## 7 Improved Content Readability

- View the count of files affected by an operation in the enhanced Check-In, Check-Out, Undo Check-Out, Change State, Get, and Rollback dialogs.
- Resize columns in the variables area in the SOLIDWORKS PDM Task Pane.

### Benefits

Improve content readability to quickly understand the scope of a performed operation.

## Our 3DEXPERIENCE® platform powers our brand applications, serving 11 industries, and provides a rich portfolio of industry solution experiences.

Dassault Systèmes, the 3DEXPERIENCE Company, is a catalyst for human progress. We provide business and people with collaborative virtual environments to imagine sustainable innovations. By creating 'virtual experience twins' of the real world with our 3DEXPERIENCE platform and applications, our customers push the boundaries of innovation, learning and production.

Dassault Systèmes' 20,000 employees are bringing value to more than 270,000 customers of all sizes, in all industries, in more than 140 countries. For more information, visit [www.3ds.com](http://www.3ds.com).

